

## One22 Parkview: 23 Apartments next to Vondelpark



### For Rent. Fully & Semi Furnished.

One22 Parkview is a newly constructed complex located at Amstelveenseweg 122 in Amsterdam. There are 23 fully furnished and semi furnished apartments with storage and private parking. Available from November 2017.



### Modern Apartments.

Each apartment comes with a living room, an open kitchen, 1 or 2 bedrooms and a balcony with a great view. Comfortable, smartly designed, with an average space of 70 sqmt.



### Great Location.

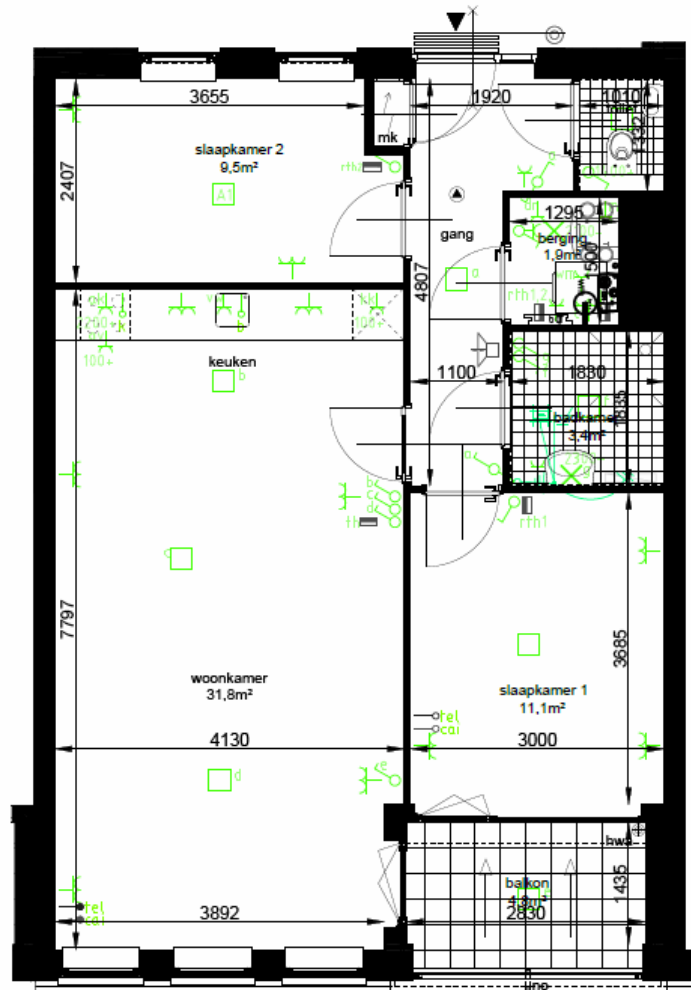
One22 Parkview has the best location in Amsterdam, located just opposite to the entrance of Vondelpark at the Oud Zuid area. Trams and buses stop right outside the door. ([See on the map](#)).







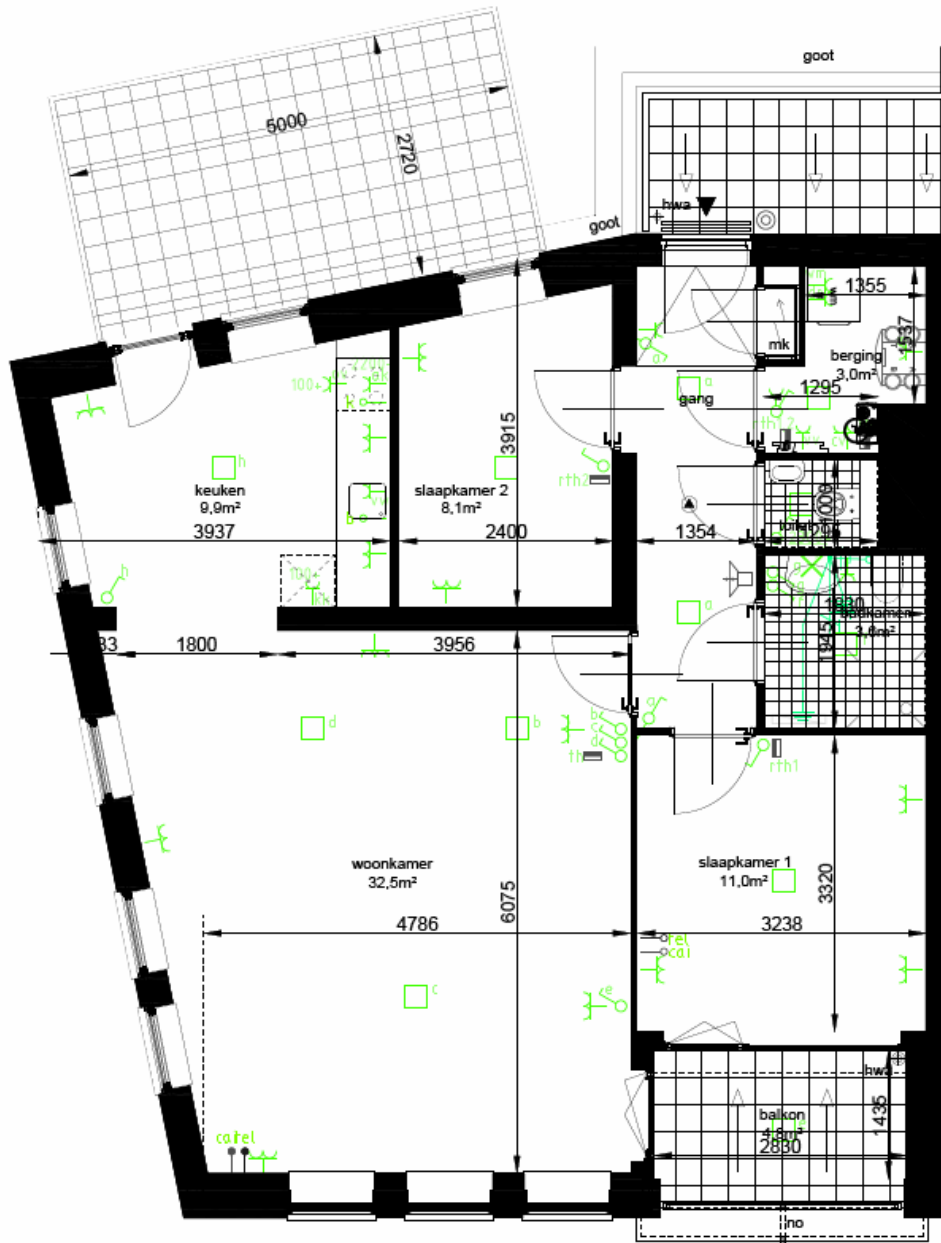
## Apartment Type C







Apartment Type F





## Inventory List

### **Semi Furnished**

Kitchen  
Bathroom  
Laminate floor  
Painted walls  
Curtains  
Balcony  
Storage room  
Ceiling lights  
Washing machine  
Tumble dryer

### **Fully Furnished**

All semi furnished amenities  
1 Sofa (2/3 seater)  
1 Armchair  
1 Standing lamp  
1 Coffee table  
1 Carpet  
1 Wardrobe  
1 TV cabinet  
1 Television 40"  
1 Dining table  
4 Dining chairs  
1 Kitchen package  
4 Boxspring + mattress + top mattress  
4 Nightstand  
4 Bedside lamps  
1 Wardrobe closet  
2 Low cabinet  
2 Bed and linen package  
1 Vacuum cleaner  
1 Waste bin  
1 Bucket and mop  
1 brush and dustpan  
1 Sponge and cloth  
1 Dish brush and drip tray  
1 Laundry basket  
1 Drying rack  
1 Iron + Ironing board  
1 Towel rack  
1 Bath linen set  
1 package of various small accessories  
1 Bistro set

## Rental Prices

Unit Number	Floor	Type	Bedrooms	Semi Furnished	Fully Furnished
A01	Ground Floor	Type A	One-bedroom	€ 1.700,00	€ 1.900,00
A02	1st Floor	Type B	Two-bedroom	€ 1.750,00	€ 1.950,00
A03	1st Floor	Type C	Two-bedroom	€ 1.750,00	€ 1.950,00
A04	1st Floor	Type C	Two-bedroom	€ 1.750,00	€ 1.950,00
A05	1st Floor	Type C	Two-bedroom	€ 1.750,00	€ 1.950,00
A06	1st Floor	Type D	One-bedroom	€ 1.700,00	€ 1.900,00
A07	1st Floor	Type E	Two-bedroom	€ 1.750,00	€ 1.950,00
A08	2nd Floor	Type B	Two-bedroom	€ 1.850,00	€ 2.050,00
A09	2nd Floor	Type C	Two-bedroom	€ 1.850,00	€ 2.050,00
A10	2nd Floor	Type C	Two-bedroom	€ 1.850,00	€ 2.050,00
A11	2nd Floor	Type C	Two-bedroom	€ 1.850,00	€ 2.050,00
A12	2nd Floor	Type D	One-bedroom	€ 1.800,00	€ 2.000,00
A13	2nd Floor	Type E	Two-bedroom	€ 1.850,00	€ 2.050,00
A14	3rd Floor	Type B	Two-bedroom	€ 1.950,00	€ 2.150,00
A15	3rd Floor	Type C	Two-bedroom	€ 1.950,00	€ 2.150,00
A16	3rd Floor	Type C	Two-bedroom	€ 1.950,00	€ 2.150,00
A17	3rd Floor	Type C	Two-bedroom	€ 1.950,00	€ 2.150,00
A18	3rd Floor	Type F	Two-bedroom	€ 1.950,00	€ 2.150,00
A19	4th Floor	Type B	Two-bedroom	€ 2.050,00	€ 2.250,00
A20	4th Floor	Type C	Two-bedroom	€ 2.050,00	€ 2.250,00
A21	4th Floor	Type C	Two-bedroom	€ 2.050,00	€ 2.250,00
A22	4th Floor	Type C	Two-bedroom	€ 2.050,00	€ 2.250,00
A23	4th Floor	Type F	Two-bedroom	€ 2.050,00	€ 2.250,00

Above rental prices exclude utilities, service cost, and parking.

**Service Cost:** € 80,00 per month

**Parking:** € 175,00 per month

**Security Deposit:** 2 months rent