

**A&M**  
ARBON MILLER  
EST 1976



**A&M**  
ARBON MILLER  
EST 1976

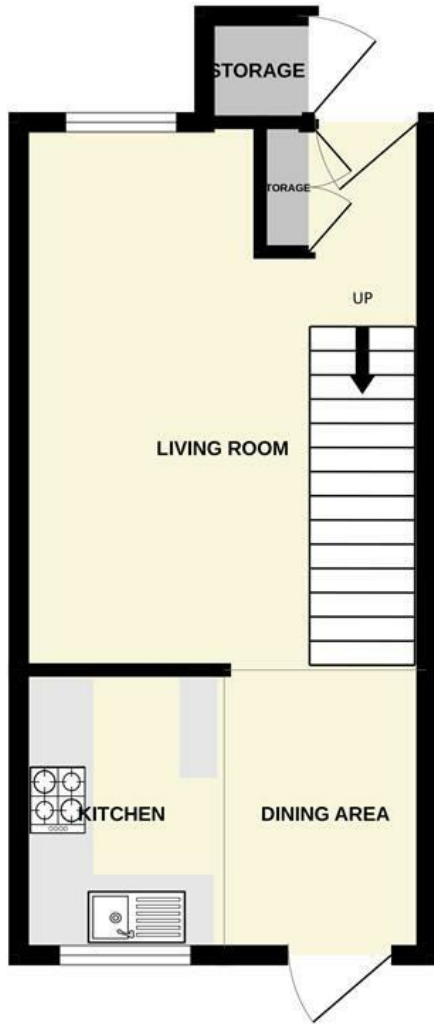
28 Sapphire Close  
Dagenham, Essex RM8 1UF  
£1,875 Per calendar month

## 28 Sapphire Close, Dagenham, Essex RM8 1UF

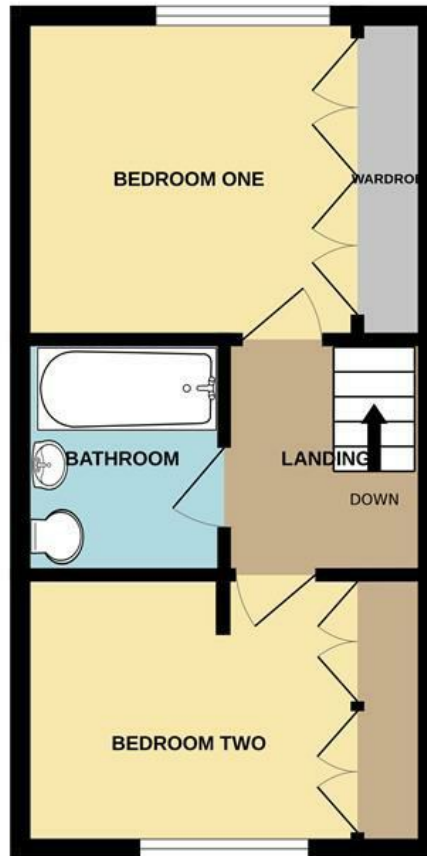
Located in a quiet residential cul-de-sac, this immaculately presented two-bedroom house at 28 Sapphire Close, RM8 offers modern, comfortable living ideal for professionals or small families. The property boasts a bright and spacious reception area, a well-maintained kitchen complete with white goods, and two generously sized bedrooms, all finished to a high standard throughout. Perfectly positioned, the home is within close proximity to highly regarded local schools and offers convenient access to nearby stations with excellent transport links into central London and surrounding areas. Additional benefits include a private garden and a peaceful neighbourhood setting. Available from 4th August 2026, early viewing is highly recommended to avoid disappointment.



GROUND FLOOR  
295 sq.ft. (27.4 sq.m.) approx.



1ST FLOOR  
285 sq.ft. (26.4 sq.m.) approx.



SAPPHIRE CLOSE RM8 1UF

TOTAL FLOOR AREA : 579 sq.ft. (53.8 sq.m.) approx.

Whilst every attempt has been made to ensure the accuracy of the floorplan contained here, measurements of doors, windows, rooms and any other items are approximate and no responsibility is taken for any error, omission or mis-statement. This plan is for illustrative purposes only and should be used as such by any prospective purchaser. The services, systems and appliances shown have not been tested and no guarantee as to their operability or efficiency can be given.  
Made with Metropix ©2024



### Energy Efficiency Rating

	Current	Potential
<i>Very energy efficient - lower running costs</i>		
(92 plus) <b>A</b>		
(81-91) <b>B</b>		
(69-80) <b>C</b>		
(55-68) <b>D</b>		
(39-54) <b>E</b>		
(21-38) <b>F</b>		
(1-20) <b>G</b>		
<i>Not energy efficient - higher running costs</i>		
<b>England &amp; Wales</b>	EU Directive 2002/91/EC	

