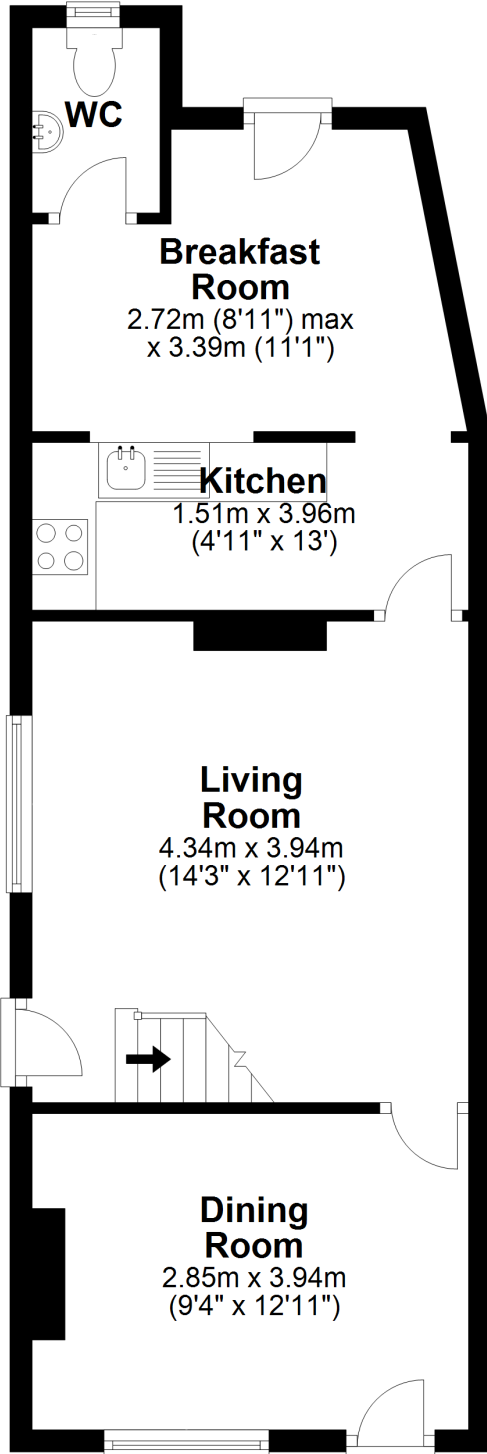


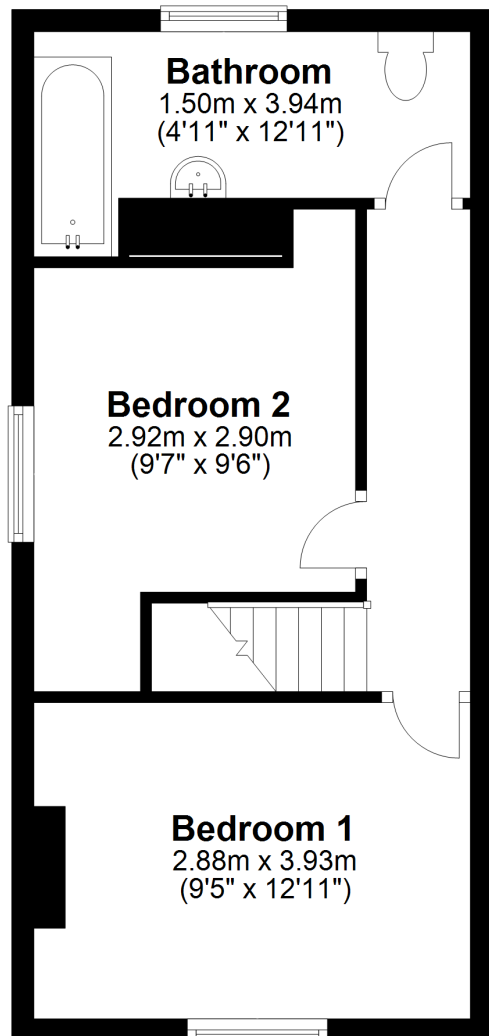
Ground Floor

Approx. 46.5 sq. metres (500.1 sq. feet)



First Floor

Approx. 35.1 sq. metres (378.0 sq. feet)



Total area: approx. 81.6 sq. metres (878.1 sq. feet)

Drawings are for guidance only
Plan produced using PlanUp.

88, London Road, Sawston