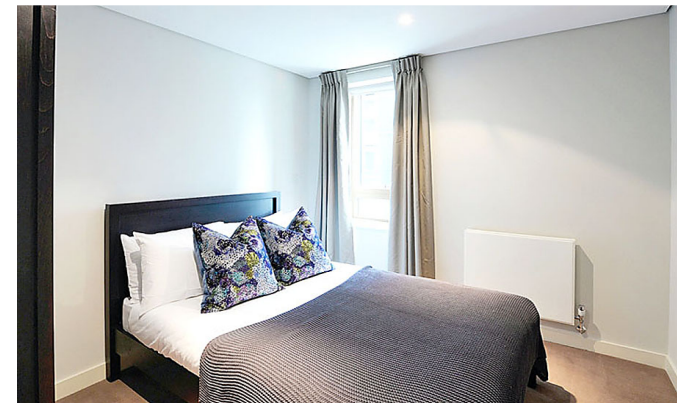




INTERLET

MERCHANT SQUARE, PADDINGTON, LONDON W2
£960 PW

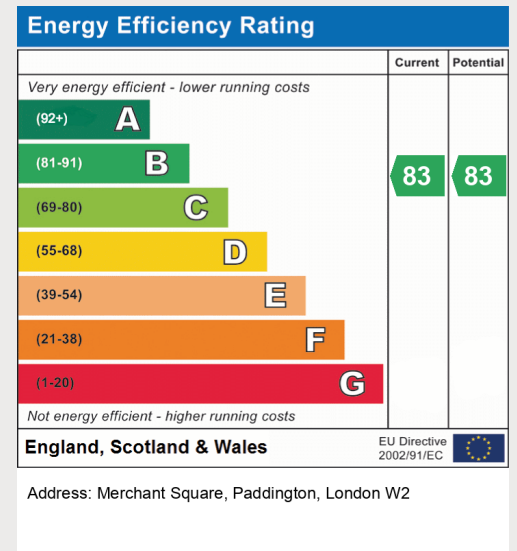


A fantastic two double bedroom, two bathroom interior designed flat in the heart of Paddington, London, W2, and close to the popular West End Quay. The apartment is situated on the tenth floor of this prestigious building and comprises spacious living and entertaining space with a beautiful reception room with superb views, a fully fitted open-plan kitchen with all modern appliances, two double bedrooms, two bathrooms, and ample storage space. Within this stunning development there is also a 24-hour concierge, lift service, and secure underground parking. The property is available furnished or unfurnished. Adjacent to the Grand Union Canal, Merchant Square is a new development and it is conveniently located moments from the transport and shopping amenities of Paddington (Bakerloo, Hammersmith & City, Circle, District lines, and Heathrow Express) and Edgware Road (Circle, District and Bakerloo lines). Hyde Park is only a short walk away.[...]

lettings@interlet.com
+44(0)20 7795 6525
www.interlet.com

Important Notice

Interlet and their clients give notice that: 1) They are not authorised to make or give any representations or warranties in relation to the property, either here or elsewhere. The particulars do not form part of any offer or contract and must not be relied upon as statements or representations of fact. 2) Any areas, measurements, and distances are approximate. The text, images, and plans are for guidance only and are not necessarily comprehensive. It should not be assumed that the property has all necessary planning, building regulation, or other contents. Interlet has not tested any services, equipment, or facilities. Prospective tenants must satisfy themselves by inspection or otherwise. Please note that the local area may be affected by aircraft noise, you should make your own inquiries regarding any noise in the area before you make an offer.



iNTERLET
SALES & LETTINGS

Welcome home.