



INTERLET

STRATHMORE COURT, ST JOHN'S WOOD, LONDON, NW8
£600 PW

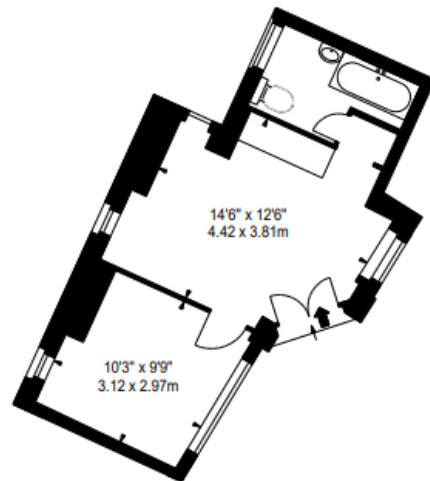


In the prestigious area of St John's Wood, this 1-bedroom, 1-bathroom flat offers a comfortable and secure living environment. The property features a spacious reception area, perfect for relaxing or entertaining. The kitchen is equipped with modern appliances, including an oven and hob, providing a functional space for meal preparation. The flat benefits from several key features, including an elevator in the building, 24/7 security, and a video door entry system, ensuring peace of mind for residents. The presence of a porter and CCTV further enhances the security and convenience of this property. Additionally, a 24-hour emergency help line is available, providing assistance whenever needed. The double bedroom offers ample space and storage, making it a comfortable retreat. The bathroom is modern and well-maintained, contributing to the overall appeal of the flat. The property is designed with ample storage space, ensuring that residents have plenty of room for their belongings. Strathmore Court is ideally situated close to transport links, making commuting and travel convenient. The proximity to Regents Park offers residents the opportunity to enjoy one of London's most famous green spaces, perfect for leisurely walks and outdoor activities. This flat is an excellent choice for those seeking a secure and well-located residence in St John's Wood, with easy acce[...]

lettings@interlet.com

+44(0)20 7795 6525

www.interlet.com



Important Notice

Interlet and their clients give notice that: 1) They are not authorised to make or give any representations or warranties in relation to the property, either here or elsewhere. The particulars do not form part of any offer or contract and must not be relied upon as statements or representations of fact. 2) Any areas, measurements, and distances are approximate. The text, images, and plans are for guidance only and are not necessarily comprehensive. It should not be assumed that the property has all necessary planning, building regulation, or other contents. Interlet has not tested any services, equipment, or facilities. Prospective tenants must satisfy themselves by inspection or otherwise. Please note that the local area may be affected by aircraft noise, you should make your own inquiries regarding any noise in the area before you make an offer.

Energy Efficiency Rating		
	Current	Potential
<i>Very energy efficient - lower running costs</i>		
(92+) A		
(81-91) B		
(69-80) C		75
(55-68) D	59	
(39-54) E		
(21-38) F		
(1-20) G		
<i>Not energy efficient - higher running costs</i>		
England, Scotland & Wales	EU Directive 2002/91/EC	
Address: Strathmore Court, St John's Wood, London, NW8		

iNTERLET
SALES & LETTINGS

Welcome home.