



Atelier, Goldhurst Terrace, South Hampstead, London, NW6

£1,700 per week + fees
Subject to contract

It's not very often you discover a sanctuary of peace, especially in a sprawling metropolis such as London. However, you may have just found your very own hidden gem.

Situated in one of the capital's most desirable locations, Atelier is an elegant and contemporary 3 bedroom home that guarantees your privacy, tranquility and comfort. A luxurious refurbishment, the distinctive 200 sqm interior demonstrates the perfect approach to open-plan living. Tall windows open out into a Winter Garden ensuring each generously proportioned space is flooded with light and the use of high quality, natural materials underline the property's commitment to the environment. Finished with sophistication and style, The Warehouse is more than just a high specification home, it's a unique and rare living environment.

Goldhurst Terrace is superbly situated for local transport links at West Hampstead and Finchley Road, with convenient access to many fashionable cafes and local amenities of West End Lane.

Available 29th January on an unfurnished basis.

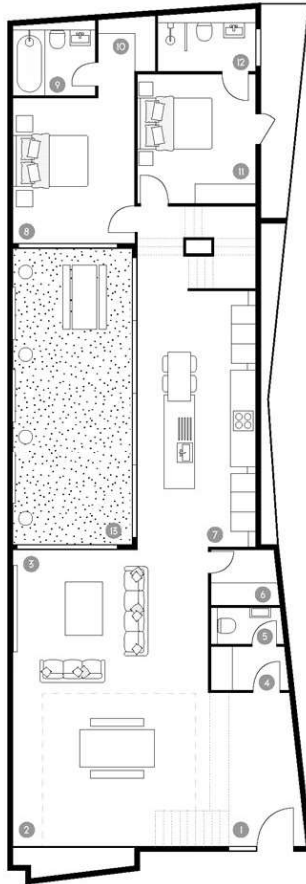
- 3 Bedrooms
- Private Courtyard Garden
- Future Proofed For Crestron Home Control System
- Osnos Sound System with Bowers & Wilkins Speakers
- CCTV Door Entryphone System
- Underfloor Heating
- Available 29th January





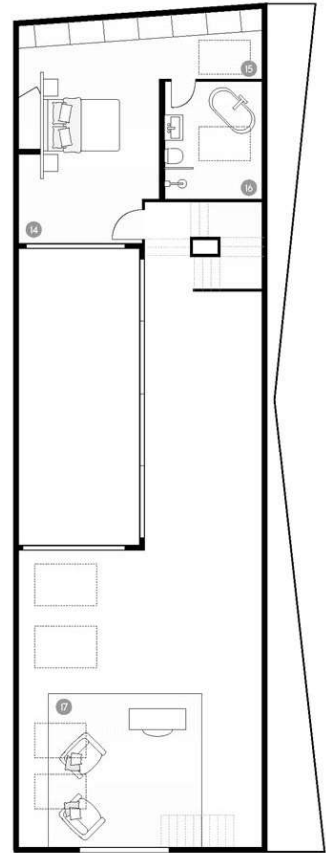
ground floor

- 1. entrance
4.7 x 2.2m 15.4 x 7.2ft
- 2. dining room
4.8 x 6.4m 15.7 x 21.0ft
- 3. reception room
4.5 x 5.8m 14.8 x 19.0ft
- 4. cloakroom
1.2 x 2.0m 3.9 x 6.6ft
- 5. wc
1.1 x 2.0m 3.6 x 6.6ft
- 6. utility room
1.7 x 1.8m 5.6 x 5.9ft
- 7. kitchen
9.0 x 3.5m 30.0 x 11.5ft
- 8. bedroom one
4.5 x 3.5m 14.8 x 11.5ft
- 9. bedroom one en-suite
1.2 x 2.0m 3.9 x 6.6ft
- 10. dressing area
1.7 x 1.1m 5.9 x 3.6ft
- 11. bedroom two
3.8 x 3.5m 12.5 x 11.5ft
- 12. bedroom two en-suite
1.5 x 2.8 4.9 x 9.2ft
- 13. winter garden
8.8 x 3.4m 29.0 x 11.2ft

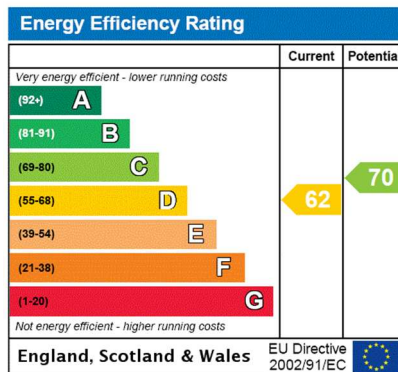


first floor

- 14. master bedroom
6.8 x 3.5m 22.3 x 11.5ft
- 15. dressing area
2.0 x 3.5m 6.6 x 11.5ft
- 16. master en-suite
3.4 x 2.5m 11.2 x 8.2ft
- 17. mezzanine
4.7 x 4.6m 15.4 x 15.1ft



Please Note: Room dimensions are to be carefully considered prior to purchase of furniture and must not be used for the purchase of flooring or window treatment. All measurements are approximate and may vary within a tolerance of 5%.



Agents Note: Whilst every care has been taken to prepare these sales particulars, they are for guidance purposes only. All measurements are approximate are for general guidance purposes only and whilst every care has been taken to ensure their accuracy, they should not be relied upon and potential buyers are advised to recheck the measurements